

# ART. A150

## “EUROMODEL” FIXED LEVER WITH THREADED INSERT

### MATERIAL:

Special high resistance glass fibre reinforced technopolymer.  
Oils and greases resistant.

### SURFACE:

Satin.

### COLOUR:

Black (RAL 9011).

### CENTRAL CAP:

Grey polyamide (RAL 7035 code 13).

### MAIN INSERT:

Zinc plated steel right through threaded bush.

### ALTERNATIVE CAP COLOUR:

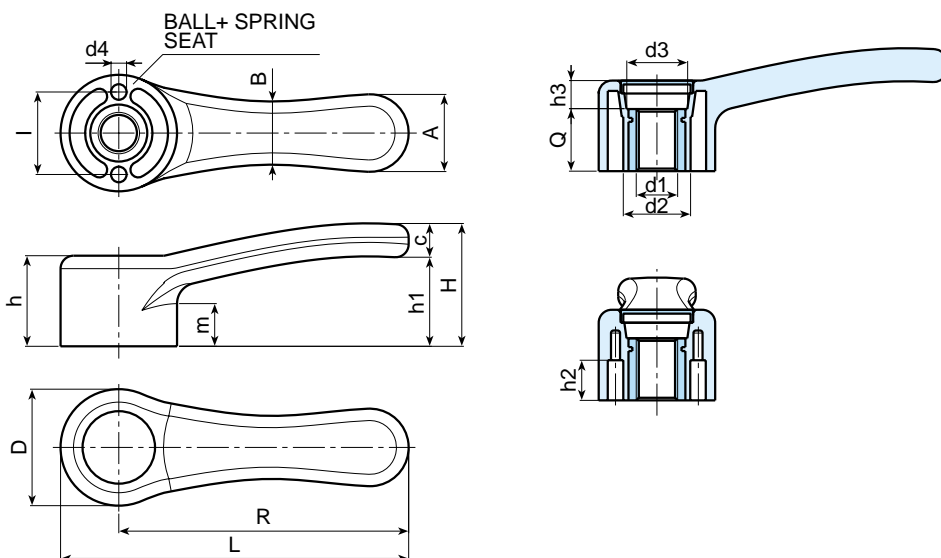
Orange (RAL 2004 cod. 02).  
Blue (RAL 5015 cod. 07).  
Yellow (RAL 1021 cod.10).  
Red (RAL 3000 cod.16).  
Green (RAL 6024 cod.17).  
Black (RAL 9011 cod. 01).

**PROTECTED  
MODEL**



### SPECIAL REQUESTS:

- Fixing springs and balls (zinc plated steel) available upon request.
- It is possible to supply the inserts in different materials, on request and for quantities.
- It is possible to supply the inserts with different treatment-finishes, on request and for quantities.
- It is possible to supply the push fit central cap with colours as shown in the table at page 22, on request.
- It is possible to supply colours as shown in the table at page 22, on request and for quantities.



Art.	R	L	D	H	h	h1	h2	h3	m	l	A	B	c	d2	d3	d4	d1	Q	Weight (gr)
A150-68 M06	68	84,5	33	37	25	27	11,5	9	12	24	20	17	10	20	16	4	M6	16	42
A150-68 M08	68	84,5	33	37	25	27	11,5	9	12	24	20	17	10	20	16	4	M8	16	40
A150-68 M10	68	84,5	33	37	25	27	11,5	9	12	24	20	17	10	20	16	4	M10	16	40
A150-86 M08	86	104	36	40	28	29	14	12	13	26	24	19	11	22	18	5	M8	16	72
A150-86 M10	86	104	36	40	28	29	14	12	13	26	24	19	11	22	18	5	M10	16	71
A150-86 M12	86	104	36	40	28	29	14	12	13	26	24	19	11	22	18	5	M12	16	70
A150-112 M12	112	134,5	45	47	36	35	14,5	12	16	32	30	24	13	26	23,5	6	M12	24	99
A150-112 M14	112	134,5	45	47	36	35	14,5	12	16	32	30	24	13	26	23,5	6	M14	24	98
A150-112 M16	112	134,5	45	47	36	35	14,5	12	16	32	30	24	13	26	23,5	6	M16	24	95
A150-142 M14	142	169,5	55	52	40	36	18	13	17,5	40	37	30	16	32	28	8	M14	27	240
A150-142 M16	142	169,5	55	52	40	36	18	13	17,5	40	37	30	16	32	28	8	M16	27	235
A150-142 M18	142	169,5	55	52	40	36	18	13	17,5	40	37	30	16	32	28	8	M18	27	230

**EUROMODEL**

**JenCan**

01454.321171

01454.320897