

ART. A151

“EUROMODEL” FIXED LEVER WITH SMOOTH INSERT

PROTECTED MODEL

MATERIAL:

Special high resistance glass fibre reinforced technopolymer.
Oils and greases resistant.

SURFACE:

Satin.

COLOUR:

Black (RAL 9011).

CENTRAL CAP:

Grey polyamide (RAL 7035 code 13).

MAIN INSERT:

Zinc plated steel right through bored bush with H7 tolerance.

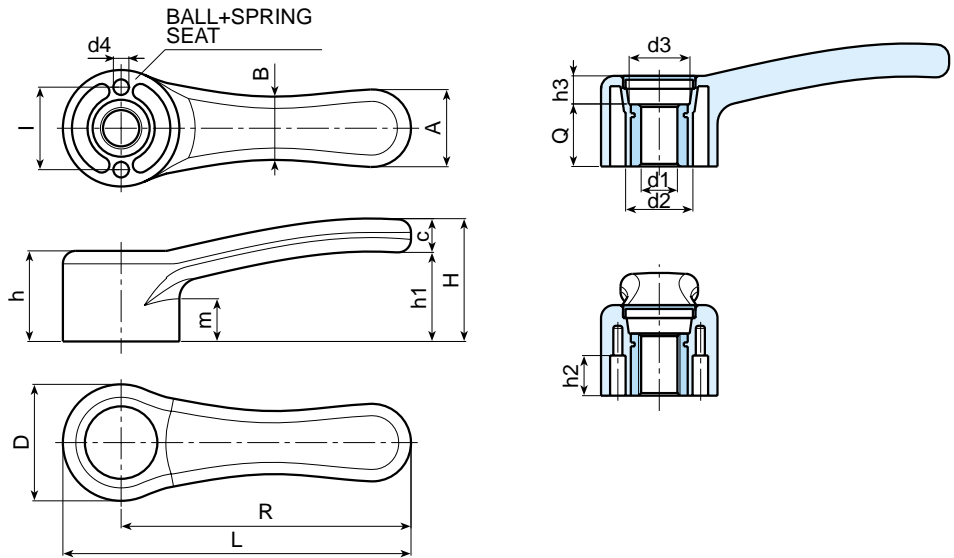
ALTERNATIVE CAP COLOUR:

Orange (RAL 2004 cod. 02).
Blue (RAL 5015 cod. 07).
Yellow (RAL 1021 cod.10).
Red (RAL 3000 cod.16).
Green (RAL 6024 cod.17).
Black (RAL 9011 cod. 01).



SPECIAL REQUESTS:

- Fixing springs and balls (zinc plated steel) available upon request.
- It is possible to supply the inserts with d1 diameter by customer design, on request and for quantities.
- It is possible to supply the inserts in different materials, on request and for quantities.
- It is possible to supply the inserts with different treatment-finishes, on request and for quantities.
- It is possible to supply the push fit central cap with colours as shown in the table at page 22, on request.
- It is possible to supply colours as shown in the table at page 22, on request and for quantities.



Art.	R	L	D	H	h	h1	h2	h3	m	l	A	B	c	d2	d3	d4	dm	d1 H7	Q	Weight (gr)
A151-68 D05	68	84,5	33	37	25	27	11,5	9	12	24	20	17	10	20	16	4	10	D05	16	45
A151-68 D10	68	84,5	33	37	25	27	11,5	9	12	24	20	17	10	20	16	4	10	D10	16	44
A151-86 D05	86	104	36	40	28	29	14	12	13	26	24	19	11	22	18	5	12	D05	16	65
A151-86 D10	86	104	36	40	28	29	14	12	13	26	24	19	11	22	18	5	12	D10	16	61
A151-112 D05	112	134,5	45	47	36	35	14,5	12	16	32	30	24	13	26	23,5	6	16	D05	24	128
A151-112 D12	112	134,5	45	47	36	35	14,5	12	16	32	30	24	13	26	23,5	6	16	D12	24	124
A151-142 D05	142	169,5	55	52	40	36	18	13	17,5	40	37	30	16	32	28	8	20	D05	27	250
A151-142 D14	142	169,5	55	52	40	36	18	13	17,5	40	37	30	16	32	28	8	20	D14	27	240

It's possible to increase the hole, by boring, until dm.

FIXED AND INDEXED LEVERS