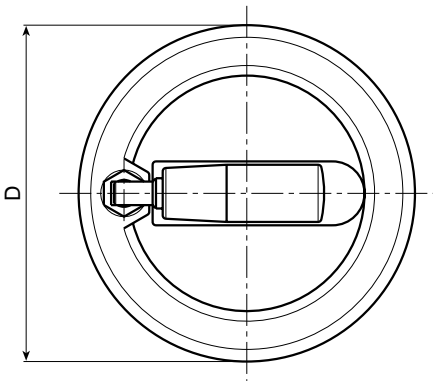
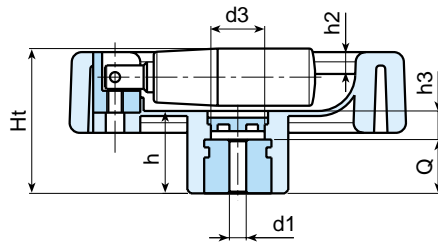
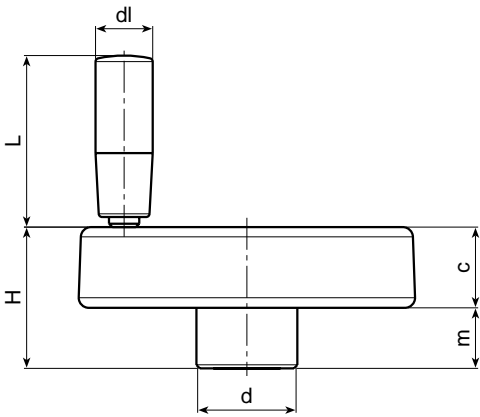


# ART. C199

## SOLID CONTROL HANDWHEEL WITH CENTRAL FOLDAWAY REVOLVING HANDLE



**MATERIAL:**

Reinforced and stabilised polyamide. Oils and greases resistant.

**SURFACE:**

Satin.

**HANDWHEEL AND HANDLE COLOUR:**

Black (RAL 9011).

**CENTRAL CAP:**

Grey polyamide (RAL 7035 code 13).

**MAIN INSERT:**

Zinc plated steel right through bored bush with H7 tolerance.

**SIDE HANDLE:**

Flush, foldaway revolving handle, with hexagonal connection. Reinforced polyamide handle. Black-oxide treated internal mechanism. Fixed with black-oxide treated hexagon socket button head screw ISO 7838.

For fixing systems, or execution of tabs or square holes, please refer to the technical notes attached to the catalogue.

**SPECIAL REQUESTS:**

- It is possible to supply the inserts with d1 diameter by customer design, on request and for quantities.
- It is possible to supply the inserts in different materials, on request and for quantities.
- It is possible to supply the inserts with different treatment-finishes, on request and for quantities.
- It is possible to supply the complete handwheels with colours as shown in the table at page 22, on request and for quantities.

Art.	D	H	Ht	h	d	m	c	h2	h3	d3	d1 H7	Q	dm	dl	L	Weight (gr)
C199-80 D05	80	33	35	19	25	15	18	4	6	15	5 H9	13	12	16	38	113
C199-80 D10	80	33	35	19	25	15	18	4	6	15	10	13	12	16	38	110
C199-100 D05	100	42	43,5	24	30	18	24	6,5	8	17	5 H9	16	16	17	48	240
C199-100 D10	100	42	43,5	24	30	18	24	6,5	8	17	10	16	16	17	48	237

It's possible to increase the hole, by boring, until **dm**.

SOLID CONTROL HANDWHEELS