

ART. C970

SOLID CONTROL HANDWHEEL WITH REVOLVING HANDLE AND LOCKING HANDWHEEL

MATERIAL:

Reinforced and stabilised polyamide.
Oils and greases resistant.

SURFACE:

Satin.

HANDWHEEL AND HANDLE COLOUR:

Black (RAL 9011).

CENTRAL CAP:

Grey polyamide (RAL 7035 code 13).

MAIN INSERT:

Zinc plated steel right through bored bush with H7 tolerance.

SIDE INSERT:

Brass right through threaded bush.

SIDE HANDLE:

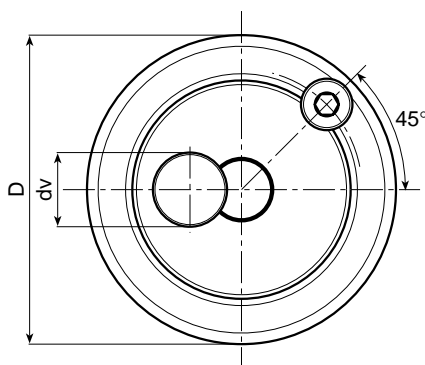
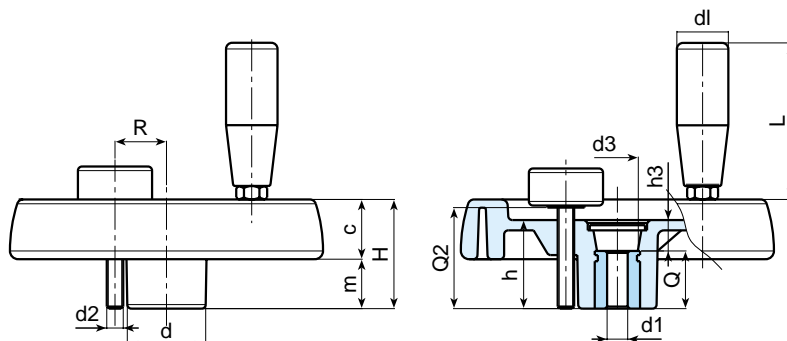
Revolving handle Art. M144
(see chapter M on page 206).

LOCKING HANDWHEEL:

Cylindrical handwheel G793-36 with threaded stud (see chapter G page 136). Black (RAL 9011).

Caution: the R and Q2 dimensions of the handwheel must be chosen by the customer according to the dimensions of the machinery on which it will be installed.

For fixing systems, or execution of tabs or square holes, please refer to the technical notes attached to the catalogue.



SPECIAL REQUESTS:

- It is possible to supply the inserts with d1 diameter by customer design, on request and for quantities.
- It is possible to supply the inserts in different materials, on request and for quantities.
- It is possible to supply the inserts with different treatment-finishes, on request and for quantities.
- It is possible to supply the complete handwheels with colours as shown in the table at page 22, on request and for quantities.

Art.	D	H	h	d	m	c	d3	h3	R	d2	Q2	d1 H7	Q	dm	dl	L	Weight (gr)
C970-100 D05	100	39	34	30	18,5	20,5	16	10	20	M6	A.R.	5 H9	24	16	20	56	252
C970-100 D10	100	39	34	30	18,5	20,5	16	10	20	M6	A.R.	10	24	16	20	56	250
C970-125 D05	125	44	37	36	20	24	26	13	22÷25	M6	A.R.	5 H9	24	18	21	65	410
C970-125 D12	125	44	37	36	20	24	26	13	22÷25	M6	A.R.	12	24	18	21	65	407
C970-150 D05	150	54	44	38	25	29	26	12	25÷28	M8	A.R.	5 H9	32	22	21	65	636
C970-150 D14	150	54	44	38	25	29	26	12	25÷28	M8	A.R.	14	32	22	21	65	625
C970-175 D05	173	57	47	40	25,5	31,5	26	15	26÷36	M8	A.R.	5 H9	32	22	23	76	812
C970-175 D16	173	57	47	40	25,5	31,5	26	15	26÷36	M8	A.R.	16	32	22	23	76	802
C970-200 D05	202	59	49	44	24	35	27	13	28÷42	M8	A.R.	5 H9	36	28	25	86	1040
C970-200 D20	202	59	49	44	24	35	27	13	28÷42	M8	A.R.	20	36	28	25	86	1025
C970-250 D05	249	68	58	59	29	39	36	22	36÷50	M8	A.R.	5 H9	36	28	25	86	1590
C970-250 D20	249	68	58	59	29	39	36	22	36÷50	M8	A.R.	20	36	28	25	86	1570

dv= 36 mm.

It's possible to increase the hole, by boring, until dm.

A.R.= Upon Request.