

ART. F 175

6-LOBE HANDWHEEL WITH THREADED FEMALE INSERT

MATERIAL:

Reinforced polyamide.
Oils and greases resistant.

SURFACE:

Satin.

COLOUR:

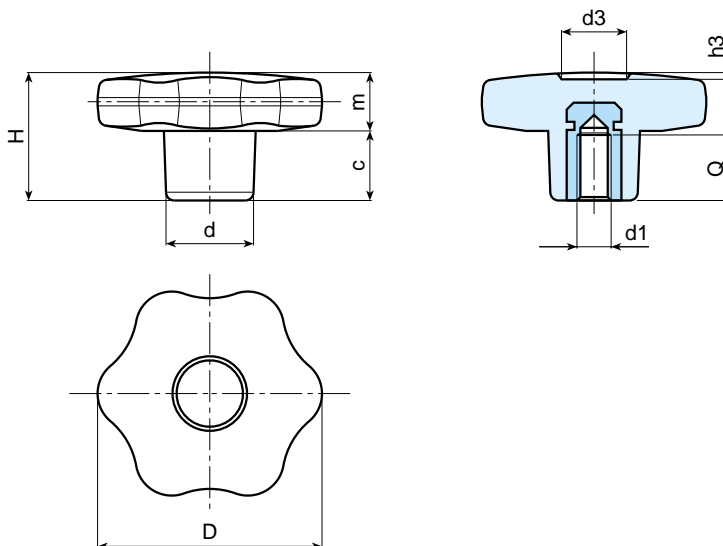
Black (RAL 9011).

MAIN INSERT:

Brass blind threaded bush.

SPECIAL REQUESTS:

- It is possible to supply the inserts in different materials, on request and for quantities.
- It is possible to supply colours as shown in the table at page 22, on request and for quantities.



Art.	D	H	d	c	m	d3	h3	Q	d1	Weight (gr)
F175-30 M04	30	22	15	11	11	9	1,5	7	M4	11,5
F175-30 M05	30	22	15	11	11	9	1,5	14	M5	11,5
F175-30 M06	30	22	15	11	11	9	1,5	10	M6	12
F175-30 M08	30	22	15	11	11	9	1,5	14	M8	13,5
F175-30 M10	30	22	15	11	11	9	1,5	14	M10	14
F175-40 M05	40	24,5	17	12	12,5	12	1	14	M5	22
F175-40 M06	40	24,5	17	12	12,5	12	1	16	M6	22
F175-40 M08	40	24,5	17	12	12,5	12	1	14	M8	21,5
F175-40 M10	40	24,5	17	12	12,5	12	1	14	M10	21
F175-50 M06	50	29	20	14	15	14,5	1,5	16	M6	36
F175-50 M08	50	29	20	14	15	14,5	1,5	14	M8	36
F175-50 M10	50	29	20	14	15	14,5	1,5	14	M10	37
F175-50 M12	50	29	20	14	15	14,5	1,5	18	M12	39
F175-60 M08	60	34	24	16	18	18	1,5	19	M8	59
F175-60 M10	60	34	24	16	18	18	1,5	21	M10	59
F175-60 M12	60	34	24	16	18	18	1,5	18	M12	62
F175-60 M14	60	34	24	16	18	18	1,5	19	M14	63