

ART. F175 CIN

6-LOBE HANDWHEEL WITH STAINLESS STEEL THREADED FEMALE INSERT

INOX

MATERIAL:

Reinforced polyamide.
Oils and greases resistant.

SURFACE:

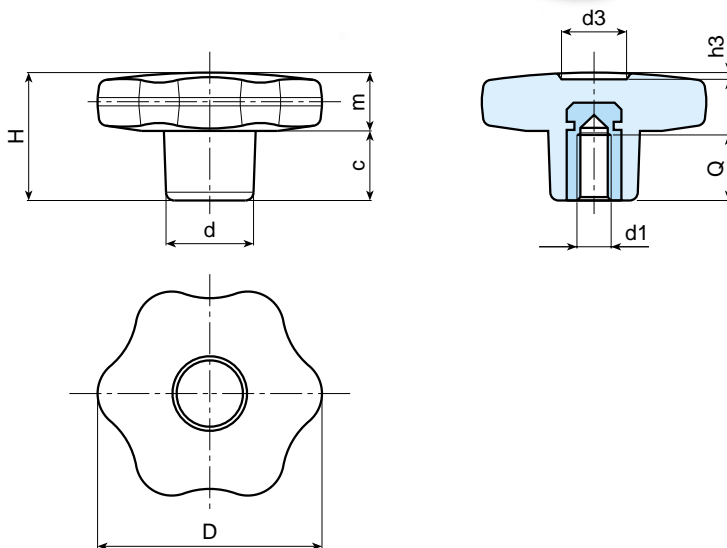
Satin.

COLOUR:

Black (RAL 9011).

MAIN INSERT:

Stainless steel blind threaded bush (AISI 303).



Art.	D	H	d	c	m	d3	h3	Q	d1	Weight (gr)
F175-30 M05 CIN	30	22	15	11	11	9	1,5	14	M5	13
F175-30 M06 CIN	30	22	15	11	11	9	1,5	10	M6	13
F175-30 M08 CIN	30	22	15	11	11	9	1,5	14	M8	13
F175-40 M06 CIN	40	24,5	17	12	12,5	12	1	16	M6	13
F175-40 M08 CIN	40	24,5	17	12	12,5	12	1	14	M8	13
F175-40 M10 CIN	40	24,5	17	12	12,5	12	1	14	M10	13
F175-50 M08 CIN	50	29	20	14	15	14,5	1,5	14	M8	13
F175-50 M10 CIN	50	29	20	14	15	14,5	1,5	14	M10	13
F175-60 M10 CIN	60	34	24	16	18	18	1,5	21	M10	13
F175-60 M12 CIN	60	34	24	16	18	18	1,5	18	M12	13