

ART. F176

6-LOBE HANDWHEEL WITH SMOOTH HOLE

MATERIAL:

Reinforced polyamide.
Oils and greases resistant.

SURFACE:

Satin.

COLOUR:

Black (RAL 9011).

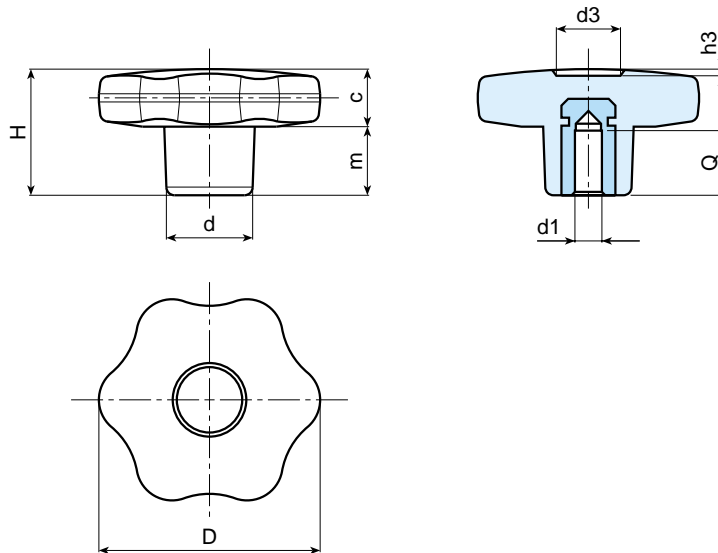
MAIN INSERT:

Brass blind bored bush with H7 tolerance.
(*) Zinc plated steel blind bored bush with H7 tolerance.



SPECIAL REQUESTS:

- It is possible to supply the inserts with d1 diameter by customer design, on request and for quantities.
- It is possible to supply the inserts in different materials, on request and for quantities.
- It is possible to supply colours as shown in the table at page 22, on request and for quantities.



Art.	D	H	d	c	m	d3	h3	Q	d1 H7	Weight (gr)
F176-30 D06	30	22	15	11	11	9	1,5	15	06	17
F176-30 D08	30	22	15	11	11	9	1,5	15	08	19
F176-40 D06	40	24,5	17	12	12,5	12	1	15	06	24
F176-40 D08	40	24,5	17	12	12,5	12	1	15	08	26
F176-40 D10	40	24,5	17	12	12,5	12	1	17	10	28
F176-50 D06	50	29	20	14	15	14,5	1,5	15	06	39
F176-50 D08	50	29	20	14	15	14,5	1,5	15	08	41
F176-50 D10	50	29	20	14	15	14,5	1,5	17	10	42
F176-60 D08	60	34	24	16	18	18	1,5	18	(*) 08	78
F176-60 D10	60	34	24	16	18	18	1,5	25	(*) 10	73
F176-60 D12	60	34	24	16	18	18	1,5	22	(*) 12	75