

ART. F178

6-LOBE HANDWHEEL WITH THREADED STUD

MATERIAL:

Reinforced polyamide.
Oils and greases resistant.

SURFACE:

Satin.

COLOUR:

Black (RAL 9011).

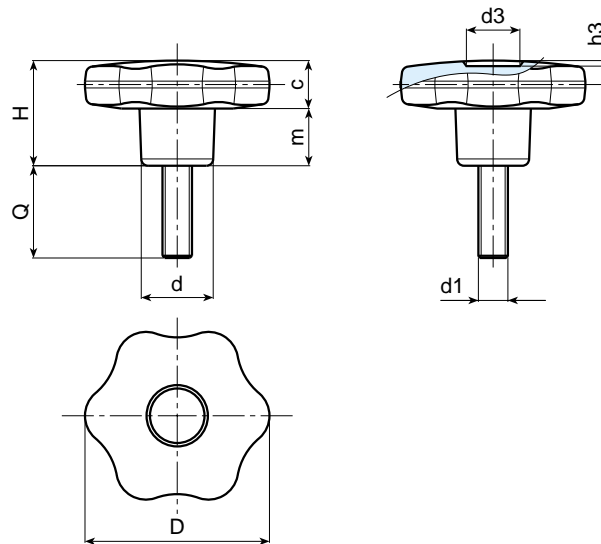
MAIN INSERT:

Zinc plated steel threaded stud.



SPECIAL REQUESTS:

- It is possible to supply the inserts with different lengths, on request and for quantities.
- It is possible to supply the inserts in different materials, on request and for quantities.
- It is possible to supply colours as shown in the table at page 22, on request and for quantities.



Art.	D	H	d	c	m	d3	h3	d1	Q	Weight (gr)
F178-30 M05	30	22	15	11	11	9	1,5	M5	16-20-30	14-15-16
F178-30 M06	30	22	15	11	11	9	1,5	M6	16-20-30	16-17-18
F178-30 M08	30	22	15	11	11	9	1,5	M8	16-20-30-40	19-21-25-28
F178-30 M10	30	22	15	11	11	9	1,5	M10	20-30-40	28-33-39
F178-40 M06	40	24,5	17	12	12,5	12	1	M6	16-20-30-40	25-25-27-28
F178-40 M08	40	24,5	17	12	12,5	12	1	M8	20-30-40-50	30-33-36-39
F178-40 M10	40	24,5	17	12	12,5	12	1	M10	20-30-40-50	37-41-45-49
F178-50 M08	50	29	20	14	15	14,5	1,5	M8	20-30-40	49-52-55
F178-50 M10	50	29	20	14	15	14,5	1,5	M10	20-30-40-50	55-60-61-64
F178-50 M12	50	29	20	14	15	14,5	1,5	M12	20-30-40-50	63-67-72-77
F178-60 M08	60	34	24	16	18	18	1,5	M8	20-30-40	68-71-74
F178-60 M10	60	34	24	16	18	18	1,5	M10	20-30-40-50	74-80-85-88
F178-60 M12	60	34	24	16	18	18	1,5	M12	20-30-40-50	95-102-109-116
F178-60 M14	60	34	24	16	18	18	1,5	M14	30-40-50	103-113-122

SOLID LOCKING HANDWHEELS