

ART. F178 CIN

6-LOBE HANDWHEEL WITH STAINLESS STEEL THREADED STUD

INOX

MATERIAL:

Reinforced polyamide.
Oils and greases resistant.

SURFACE:

Satin.

COLOUR:

Black (RAL 9011).

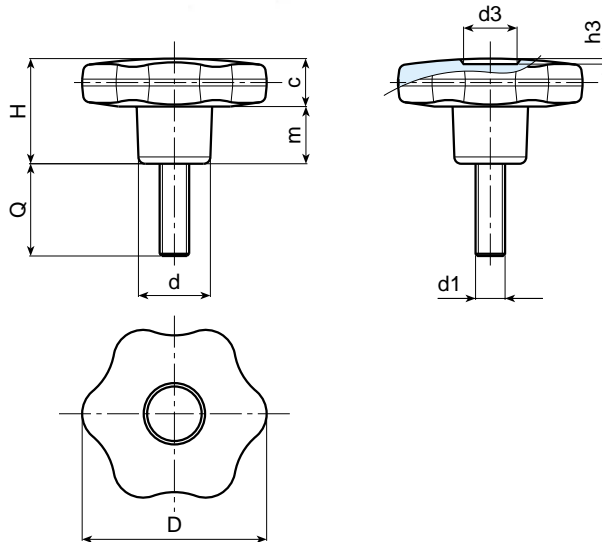
MAIN INSERT:

Stainless steel threaded stud (AISI 304).



SPECIAL REQUESTS:

- It is possible to supply the inserts with different lengths, on request and for quantities.
- It is possible to supply colours as shown in the table at page 22, on request and for quantities.



Art.	D	H	d	c	m	d3	h3	d1	Q	Weight (gr)
F178-30 M05 CIN	30	22	15	11	11	9	1,5	M5	20-40	18-20
F178-30 M06 CIN	30	22	15	11	11	9	1,5	M6	20-40	20-22
F178-30 M08 CIN	30	22	15	11	11	9	1,5	M8	20-30-40	24-28-32
F178-30 M10 CIN	30	22	15	11	11	9	1,5	M10	20-30-40	33-39-42
F178-40 M06 CIN	40	24,5	17	12	12,5	12	1	M6	20-40	26-31
F178-40 M08 CIN	40	24,5	17	12	12,5	12	1	M8	20-30-40	33-36-39
F178-40 M10 CIN	40	24,5	17	12	12,5	12	1	M10	20-30-40	40-44-49
F178-50 M08 CIN	50	29	20	14	15	14,5	1,5	M8	20-30-40	52-55-58
F178-50 M10 CIN	50	29	20	14	15	14,5	1,5	M10	20-30-40-50	59-63-64-67
F178-50 M12 CIN	50	29	20	14	15	14,5	1,5	M12	20-30-40-50	67-72-77-82
F178-60 M08 CIN	60	34	24	16	18	18	1,5	M8	20-30-40	70-73-77
F178-60 M10 CIN	60	34	24	16	18	18	1,5	M10	20-30-40-50	79-85-90-93
F178-60 M12 CIN	60	34	24	16	18	18	1,5	M12	20-30-40-50	101-108-115-123
F178-60 M14 CIN	60	34	24	16	18	18	1,5	M14	30-40-50	111-123-132