

ART. F186 CIN

CROSS HANDWHEEL WITH STAINLESS STEEL THREADED FEMALE INSERT

INOX

MATERIAL:

Reinforced polyamide.
Oils and greases resistant.

SURFACE:

Satin.

COLOUR:

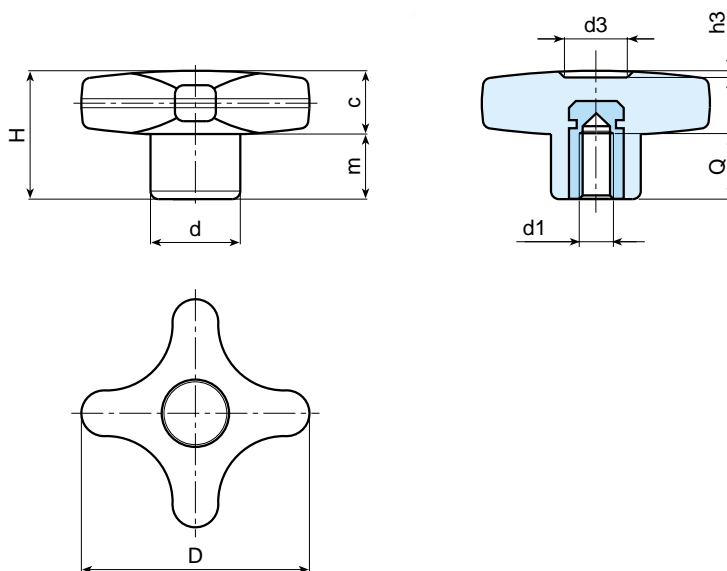
Black (RAL 9011).

MAIN INSERT:

Stainless steel blind threaded bush (AISI 303).

SPECIAL REQUESTS:

- It is possible to supply colours as shown in the table at page 22, on request and for quantities.



Art.	D	H	d	c	m	d3	h3	Q	d1	Weight (gr)
F186-32 M05 CIN	32	23	15	11	12	11	1,5	14	M5	13
F186-32 M06 CIN	32	23	15	11	12	11	1,5	10	M6	15
F186-32 M08 CIN	32	23	15	11	12	11	1,5	14	M8	15
F186-40 M06 CIN	40	24,5	16	12	12,5	13	1,5	16	M6	17
F186-40 M08 CIN	40	24,5	16	12	12,5	13	1,5	14	M8	18
F186-40 M10 CIN	40	24,5	16	12	12,5	13	1,5	14	M10	19
F186-50 M08 CIN	50	29	20	14	15	14	2	14	M08	27
F186-50 M10 CIN	50	29	20	14	15	14	2	14	M10	29
F186-50 M12 CIN	50	29	20	14	15	14	2	14	M12	30
F186-60 M10 CIN	60	34	24	15,5	18,5	18	2	21	M10	45
F186-60 M12 CIN	60	34	24	15,5	18,5	18	2	18	M12	46

SOLID LOCKING HANDWHEELS