

ART. G651

6-LOBE HANDWHEEL WITH PLUG AND THREADED STUD

MATERIAL:

Reinforced polyamide.
Oils and greases resistant.

SURFACE:

Satin.

COLOUR:

Black (RAL 9011).

CENTRAL CAP:

Grey polyamide (RAL 7035 code 13).

ALTERNATIVE CAP COLOUR:

Orange (RAL 2004 cod. 02).
Blue (RAL 5015 cod. 07).
Yellow (RAL 1021 cod.10).
Red (RAL 3000 cod.16).
Green (RAL 6024 cod.17).
Black (RAL 9011 cod. 01).

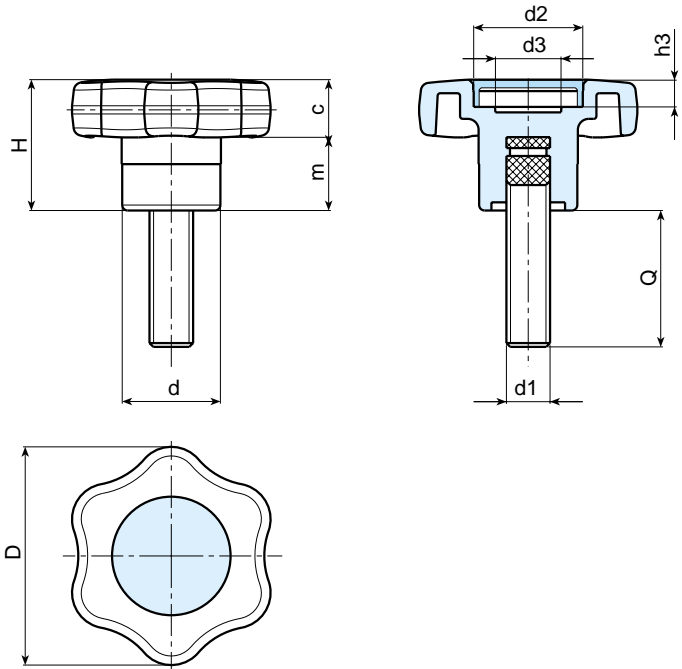
MAIN INSERT:

Zinc plated steel threaded stud.



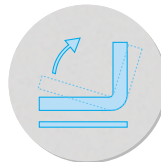
SPECIAL REQUESTS:

- It is possible to supply the inserts with different lengths, on request and for quantities.
- It is possible to supply the inserts in different materials, on request and for quantities.
- It is possible to supply the handwheel with colours as shown in the table at page 22, on request and for quantities.



PAD PRINTING SERVICE:

- Upon request and for special quantities caps can be supplied with customized pad printing.



| Art. | D | H | d | m | c | d2 | d3 | h3 | d1 | Q | Weight (gr) |
|-------------|----|----|----|------|------|----|----|----|-----|-------------|---------------|
| G651-40 M06 | 40 | 24 | 18 | 10,5 | 13,5 | 20 | 13 | 6 | M6 | 16-20-30-40 | 17-17,5-19-21 |
| G651-40 M08 | 40 | 24 | 18 | 10,5 | 13,5 | 20 | 13 | 6 | M8 | 20-30-40 | 20-23-27 |
| G651-40 M10 | 40 | 24 | 18 | 10,5 | 13,5 | 20 | 13 | 6 | M10 | 20-30-40-50 | 24-29-34-39 |

The extension of the range with the addition of diameters 50-60 is planned for the end of 2005.

01454.321171

01454.320897



EUROMODEL

sales@jencan.com
www.jencan.com

LOCKING HANDWHEELS