

ART. H760

KNURLED HANDWHEEL WITH THREADED STUD

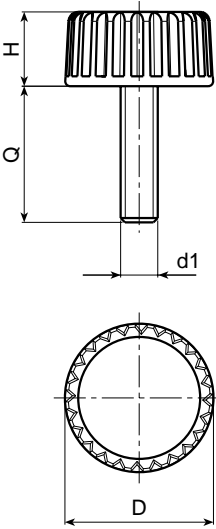
MATERIAL:
Reinforced polyamide.
Oils and greases resistant.

SURFACE:
Satin.

COLOUR:
Black (RAL 9011).

MAIN INSERT:
Zinc plated steel threaded stud.

- SPECIAL REQUESTS:**
- It is possible to supply the inserts with different lengths, on request and for quantities.
 - It is possible to supply the inserts in different materials, on request and for quantities.
 - It is possible to supply colours as shown in the table at page 22, on request and for quantities.



Art.	D	H	d1	Q	Weight (gr)
H760-15 M04	15	8	M4	15-19-24	2-2,5-3
H760-15 M05	15	8	M5	15-19-24-29	3,5
H760-15 M06	15	8	M6	15-19-24-29	5,5-6,5-7-7,5

KNURLED HANDWHEELS