

ART. L273

T HANDLE WITH SMOOTH HOLE INSERT

MATERIAL:

Reinforced polyamide.
Oils and greases resistant.

SURFACE:

Satin.

COLOUR:

Black (RAL 9011).

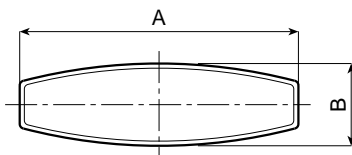
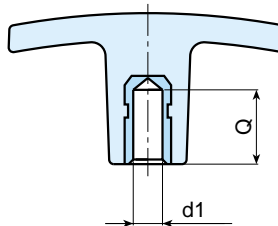
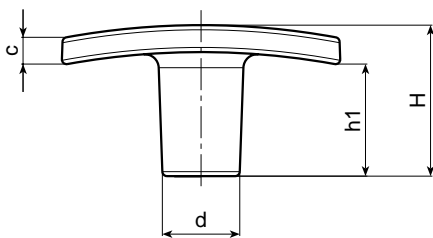
MAIN INSERT:

Brass blind bored bush with H7 tolerance.
(* Zinc plated steel blind bored bush with H7 tolerance.



SPECIAL REQUESTS:

- It is possible to supply the inserts with d1 diameter by customer design, on request and for quantities.
- It is possible to supply the inserts in different materials, on request and for quantities.
- It is possible to supply colours as shown in the table at page 22, on request and for quantities.



Art.	A	B	H	h1	c	d	d1 H7	Q	Weight (gr)	F1 (N)
L273-50 D6	50	15	24	17	5	14	6	16	12	4100
L273-60 D6	60	18	33	24	6	16,5	6	16	19	5800
L273-60 D8	60	18	33	24	6	16,5	8	15	21	5800
L273-72 D8	72	19	34	20	10	18	8	15	28	6500
L273-72 D10	72	19	34	20	10	18	(* 10	17	30	6500

