

# ART. M144

## REVOLVING HANDLE WITH SCREW AND NUT

**MATERIAL:**

Reinforced polyamide.  
Oils and greases resistant.

**SURFACE:**

Satin.

**COLOUR:**

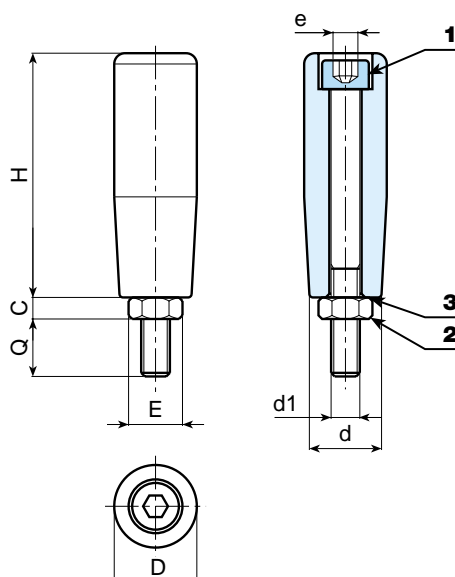
Black (RAL 9011).

**INSERTS:**

- (1) Threaded black oxide-treated steel screw TCCE DIN 912.
- (2) Threaded black oxide-treated steel nut DIN 934.
- (\*) (3) Black oxide-treated steel washer.

**SPECIAL REQUESTS:**

- It is possible to supply the inserts in different materials, on request and for quantities.
- It is possible to supply the inserts with different treatment-finishes, on request and for quantities.
- It is possible to supply colours as shown in the table at page 22, on request and for quantities.



Art.	H	D	d	c	E	e	d1	Q	Weight (gr)
M144-50 M06	50	20	15	5	10 (11)	5 (6)	(*) M6	10	30
M144-50 M08	50	20	15	5	10 (11)	5 (6)	(*) M8	13	32
M144-60 M08	59	21	19	6	13 (15)	6 (7)	M8	15	56
M144-70 M08	68	23	20	8	17 (19)	8 (9)	M8	16	68
M144-70 M10	68	23	20	8	17 (19)	8 (9)	M10	16	92
M144-80 M10	78	25	22	8	17 (19)	8 (9)	M10	15	110
M144-90 M12	88	28	22,5	7	19 (21)	10 (12)	M12	17	150