

ART. Q260

KNURLED WASHER

MATERIAL:

Duroplast.
Oils and greases resistant.
High temperatures resistant.

SURFACE:

Glossy.

COLOUR:

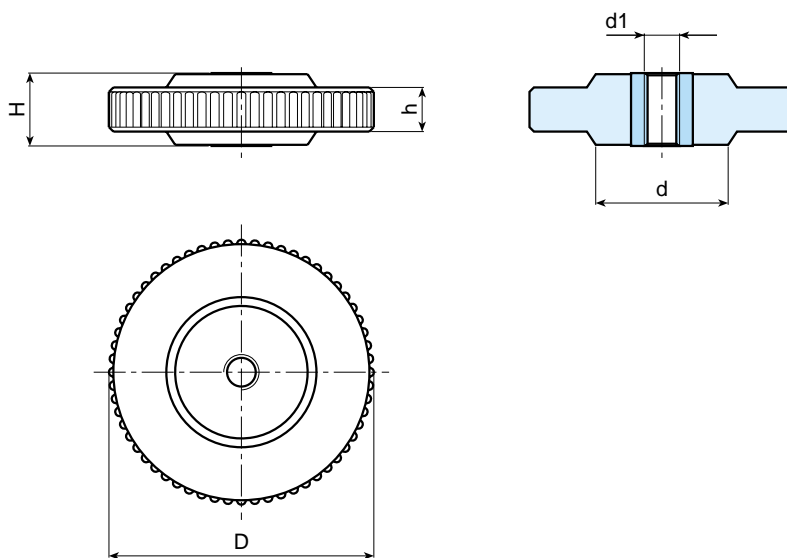
Black (RAL 9011).

MAIN INSERT:

Zinc plated right through threaded bush.

SPECIAL REQUESTS:

- It is possible to supply the inserts in different materials, on request and for quantities.



Art.	D	H	d	h	d1	Weight (gr)
Q260-45 M6	47	10	-	-	M6	31
Q260-45 M8	47	10	-	-	M8	32
Q260-45 M10	47	10	-	-	M10	34
Q260-45 M12	47	10	-	-	M12	35
Q260-45 M14	47	10	-	-	M14	38
Q260-45 M16	47	10	-	-	M16	42
Q260-60 M8	60	16	30	11	M8	62
Q260-60 M10	60	16	30	11	M10	65
Q260-60 M12	60	16	30	11	M12	68
Q260-60 M14	60	16	30	11	M14	70
Q260-60 M16	60	16	30	11	M16	73