

# ART. S602 TG10

## REEL HOLDER WITHOUT PIN

**MATERIAL:**

(1-3-4-6) Reinforced polyamide.  
Oils and greases resistant.

**SURFACE:**

Satin.

**COLOUR:**

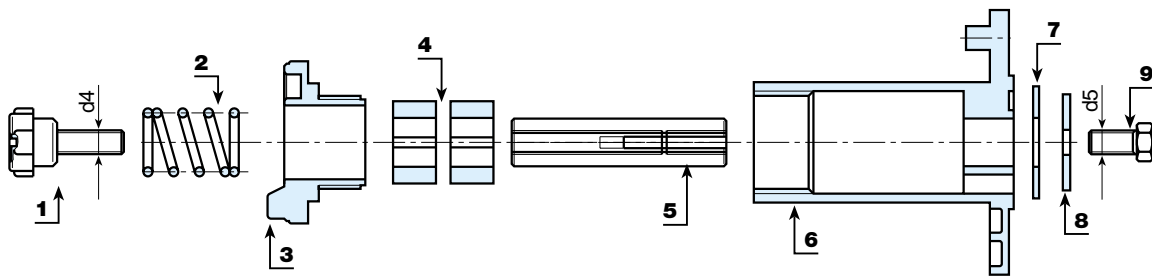
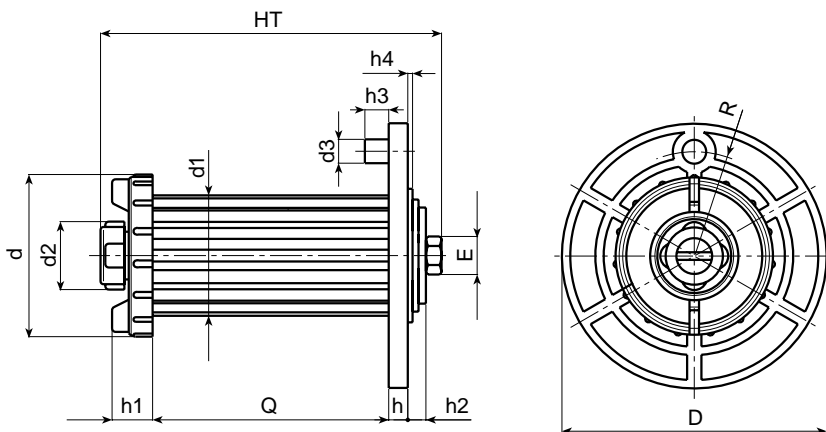
Black (RAL 9011).

**MAIN INSERTS:**

- (2) Zinc plated steel spring.
- (5) Threaded insert in zinc plated steel.
- (7) Washer in thermoplastic rubber 75 Shore.
- (8) Zinc plated steel washer.
- (9) Hexagonal head screw in zinc plated steel threaded right or left hand. The choice is made on the basis of the rotation direction of the wire feed motor.

**SPECIAL REQUESTS:**

- None.



Art.	D	HT	d	d1	d2	d3	d4	d5	h	h1	h2	h3	h4	E	Q	R	Weight (gr)
<b>For reel of Kg. 5</b>																	
S602-74 TG10 M10 DX	112	102	68	50,5	28	10	M10 DX	M10 DX	9	17	8	7	1,7	13	55	44	350
S602-74 TG10 M10 SX	112	102	68	50,5	28	10	M10 DX	M10 SX	9	17	8	7	1,7	13	55	44	350
<b>For reel of Kg. 15</b>																	
S602-116 TG10 M10 DX	112	140	68	50,5	28	10	M10 DX	M10 DX	9	17	8	7	1,7	17	99	44	545
S602-116 TG10 M10 SX	112	140	68	50,5	28	10	M10 DX	M10 SX	9	17	8	7	1,7	17	99	44	545