

ART. W466

KNURLED METAL HANDWHEEL WITH THREADED HOLE

MATERIAL:

Steel with property class 5.8.

SURFACE:

Low roughness turned surface.

STANDARD COLOUR:

H - Nickel-plated (surface treatment).

ALTERNATIVO COLOUR ON REQUEST:

B - Black -oxide (surface treatment)

Z - Galvanised (surface treatment)

D - Dacromet® (surface treatment)

To be specified with the order.

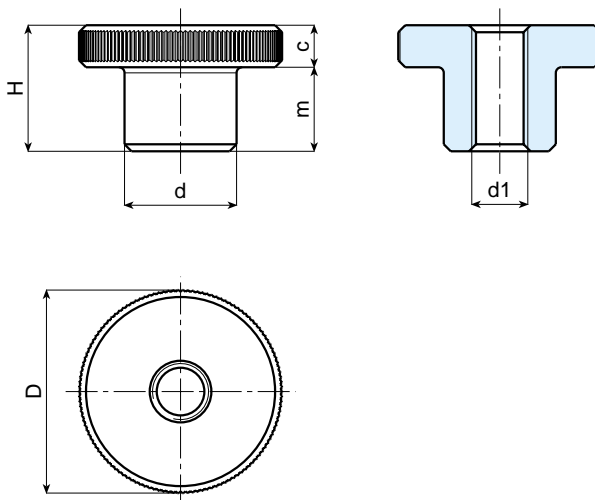
HOLE:

Threaded through hole in the steel with tolerance class of 6H.



SPECIAL REQUESTS:

- It is possible to supply the handwheels with customised hole d1, on request and for quantities.



Art.	d	D	H	m	c	d1	Weight (g)
W466-11 M3 "HBZD"	6	11	8	5	3	M3	
W466-15 M4 "HBZD"	8	15	10	6	4	M4	
W466-19 M5 "HBZD"	10	19	12	8	4	M5	
W466-23 M6 "HBZD"	12	23	15	10	5	M6	
W466-29 M8 "HBZD"	16	29	18	12	6	M8	
W466-35 M10 "HBZD"	20	35	23	15	8	M10	
W466-39 M12 "HBZD"	22	39	25	15	10	M12	