

# ART. W500 - W502 CIN

## FIXED METAL LEVER WITH STAINLESS STEEL INCLINED HANDLE

**INOX**

**MATERIAL:**

Stainless steel (AISI 303).

**SURFACE:**

Low roughness turned surface.

**COLOUR:**

Natural.

**HANDGRIP:**

Short handle I500, reinforced polyamide, black RAL 9011 (see Chap. I page 174).

**HANDGRIP FASTENING:**

Push-fit. Removable.

**HOLE:**

**VERSION W500 CIN:**

Female threaded hole with tolerance class of 6H.

**VERSION W502 CIN:**

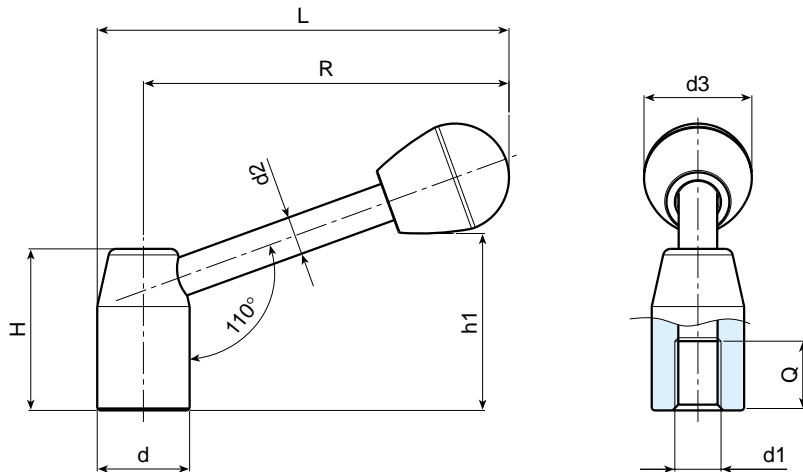
Smooth blind hole with tolerance class of H7.



For fixing systems please refer to the technical notes attached to the catalogue.

**SPECIAL REQUESTS:**

- It is possible to supply the levers with customised hole d1, on request and for quantities.
- It is possible to supply the handgrip with colours as shown in the table at page 22, on request and for quantities.



**Version W500 CIN with female threaded hole**

Art.	d	R	L	H	Ht	h1	d2	d3	d1	Q	Weight (g)
W500-80 CIN M10	22	80	91	38	64	42	8	22	M10	15	120
W500-95 CIN M12	24	95	107	42	75	46	10	28	M12	18	170
W500-110 CIN M12	28	110	124	48	84	55	12	28	M12	18	290
W500-125 CIN M16	32	125	141	52	94	61	12	32	M16	23	350

**Version W502 CIN with smooth blind hole**

Art.	d	R	L	H	Ht	h1	d2	d3	d1 H7	Q	Weight (g)
W502-80 CIN D10	22	80	91	38	64	42	8	22	10	15	119
W502-95 CIN D12	24	95	107	42	75	46	10	28	12	18	168
W502-110 CIN D12	28	110	124	48	84	55	12	28	12	18	287
W502-125 CIN D16	32	125	141	52	94	61	12	32	16	23	350

METAL SERIES